

VIADRUS

Power of heating

Hercules U24

Cast-iron down burning solid fuel boiler

Hercules U24 allows the combustion of coke, soft coal and hard coal in the process of down burning in a cast-iron boiler block while meeting the very strict Class 3 emission conditions of EN 303-5 standard. The boilers with eight sections and more are equipped with the second draft regulator in the rear part of the boiler from the size of eight sections. The security device against overheating is obliged for closed heating systems. It is not necessary for opened heating systems.

Advantages:

- environmentally friendly burning of coal and coke
- Class 3 of EN 303-5 standard
- high quality Czech made cast-iron heat exchanger
- water-cooled fixed grates
- suitable for natural circulation heating systems
- boiler output by number of its sections
- easy cleaning of flue gases pathways

Fuel / fuel humidity:

- soft coal, 20~40 mm / <15%
- coke, 20~40 mm / <15%
- hard coal, 20~40 mm / <15%

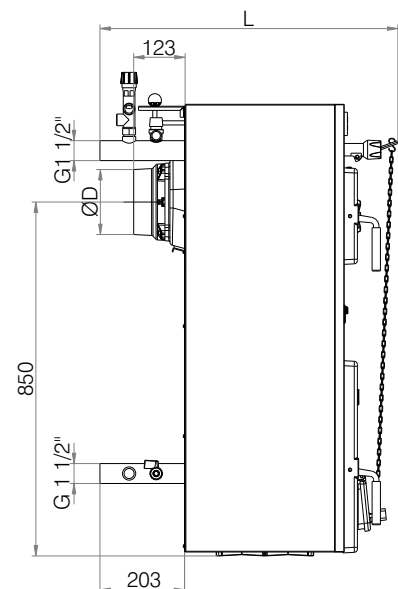
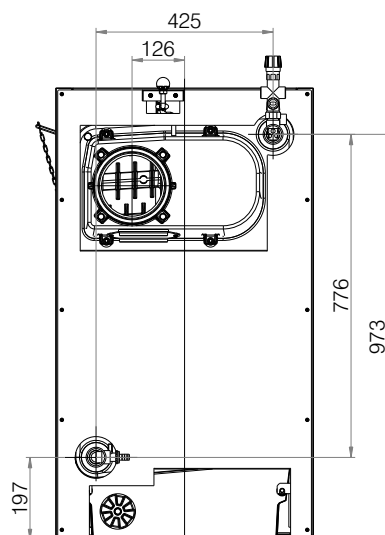
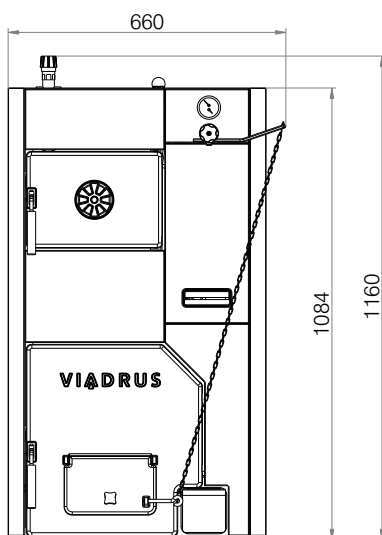
Output (according to section number):

- 13~74 kW



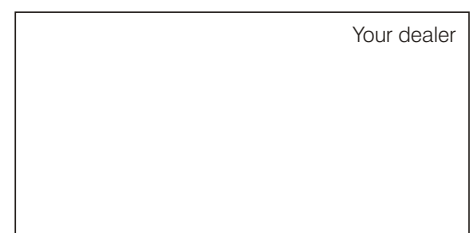
Technical parameters

Section number	pcs	3	4	5	6	7	8	9	10	
Boiler class according to EN 303 - 5	-					3				
Rated output	- coke	kW	17	25	37	46	52	58	66	74
	- hard coal	kW	16	25	32	42	46	53	60	67
	- soft coal	kW	13	19	25	31	37	43	49	55
Fuel consumption	- coke	kg/hour	2,3	3,6	5,4	6,5	7,4	8,2	9,4	10,5
	- hard coal	kg/hour	2,7	3,8	4,8	5,9	6,9	8,0	9,0	10,0
	- soft coal	kg/hour	2,6	3,8	5,0	6,2	7,4	8,6	9,8	11,0
Efficiency	- coke / hard coal / soft coal	%				80 / 79 / 78				
Flue gases temperature	- coke / hard coal / soft coal	°C			200~280 / 250~270 / 220~250					
Burning time at one full load	- coke / hard coal / soft coal	hours			4 / 4 / 4					
Dimensions	- height x width	mm				1160 x 660				
	- depth L	mm	710	830	1050	1160	1270	1380	1490	1600
Weight		kg	262	312	362	412	462	512	562	612
Fire chamber depth		mm	220	330	440	550	660	770	880	990
Stokehole size		mm				245 x 195				
Chimney connection diameter		mm	156	156	156	156	156	176	176	176
Chimney draught		Pa	>13	>14	>15	>20	>22	>28	>30	>32
Heating and return water connection		-				6/4"				
Water working overpressure		kPa				50~400				
Water testing overpressure		kPa				800				
Recommended water working temperature		°C				60~85				
Return water min. temperature		°C				60				
Water volume		l	39,5	49,3	59,1	68,9	78,7	88,5	98,0	107,8
Safety after-cooling exchanger cooling water temperature		°C				5~20				
Safety after-cooling exchanger cooling water overpressure		kPa				200~600				
Noise level		dB				<65 dB (A)				



Burning scheme

Cast-iron pedestal (optional accessory)



Your dealer

This is only an illustrative and informative matter.